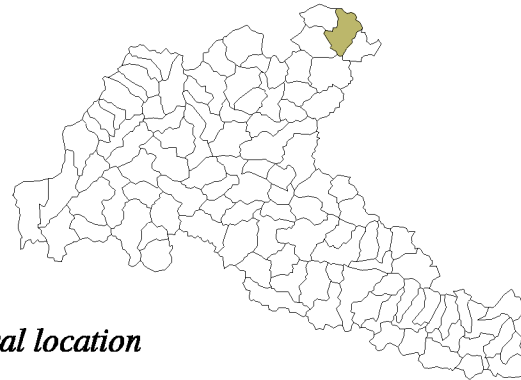


Hult Reservoir Drainage



General location

General characteristics

7th field huc id = = 171 002060401 02

Parent watershed = LAKE CREEK

Total acreage = 5588

Maximum elevation = 794 feet

Minimum elevation = 221 feet

Ecological Capital

10 percent of the catchment has potential to contribute lwd to the aquatic system

40 percent of the stream system has adequate shading

29 percent of the riparian area is in good condition

11 miles of stream have inherently good coho spawning and rearing habitat

35 acres of potential or existing wetlands are present within the catchment

Potential Threats

There are 69 points where roads cross over fish bearing streams

Riparian road density = 1.16 miles per square mile

Mid-slope road density = 2.29 miles per square mile

2 percent of the catchment is considered to have a high potential of land slide occurrence

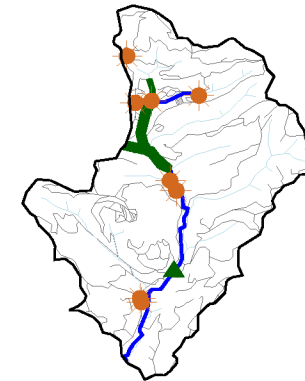
Ownership Patterns




less than 1 percent of the catchment is private non-industrial

14 percent of the catchment is private industrial

84 percent of the catchment is federally owned

less than 1 percent of the catchment falls on other public lands



-  Anadromous fish bearing streams
-  Potential problem culverts
-  In-stream habitat and wetland restoration / revegetation projects

Notes

The catchment is dominated by moderate or low gradient confined or moderately confined channel habitat types. A total of 4.93 miles of stream are considered anadromous fish bearing and no miles of stream have digitized habitat surveys. A total of 1.26 miles of spawning surveys have been conducted since 1990 reflecting relatively moderate numbers of coho spawners. A total of 0.01 miles of snorkel surveys have been conducted reflecting relatively low numbers of juvenile coho.

Due to lack of large diameter trees in the riparian area or directly contributing to the aquatic system, large woody debris in the stream system is most likely in short supply. Stream temperatures may be high due to the high percent of streams exposed to direct sunlight. Streamside shading is most likely limiting water quality for fish habitat.