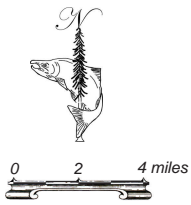
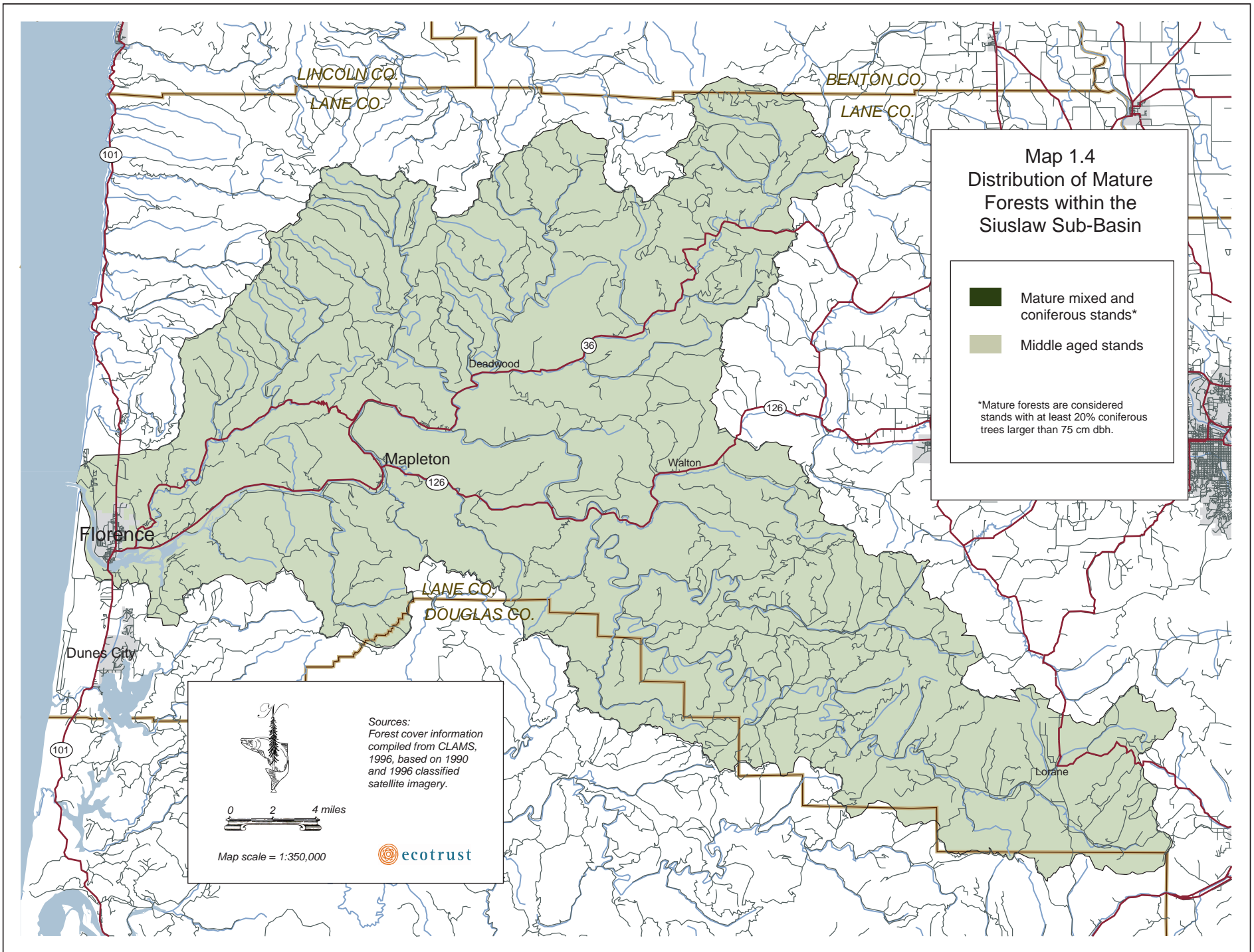


**Map 1.4**  
**Distribution of Mature**  
**Forests within the**  
**Siuslaw Sub-Basin**

- Mature mixed and coniferous stands\*
- Middle aged stands

\*Mature forests are considered stands with at least 20% coniferous trees larger than 75 cm dbh.



Sources:  
 Forest cover information  
 compiled from CLAMS,  
 1996, based on 1990  
 and 1996 classified  
 satellite imagery.



Map scale = 1:350,000

